



Valuweight T-Shirts

Description & Features

- Updated sleeve shape for improved fit
- Cotton/Lycra® rib crew neck with taped neckline for comfort
- Produced using Belcoro® yarn for a softer feel and cleaner printing process
- Fine knit gauge for enhanced printability

Fabric

100% cotton*, Belcoro® yarn
 *Ash 99% cotton, 1% polyester
 *Heather Grey 97% cotton, 3% polyester

Weight

White – 160gm/m²
 Colour – 165gm/m²

Sizing

All measurements in centimetres

| Size | Width* | Length** |
|------|--------|----------|
| S | 48.5 | 69.5 |
| M | 53.5 | 72 |
| L | 56 | 74.5 |
| XL | 61 | 77 |
| XXL | 66 | 78.5 |
| XXXL | 71 | 80 |

Tolerance +/- 2.5cm width 2.5cm length

* Measure across garment 1cm down from armholes

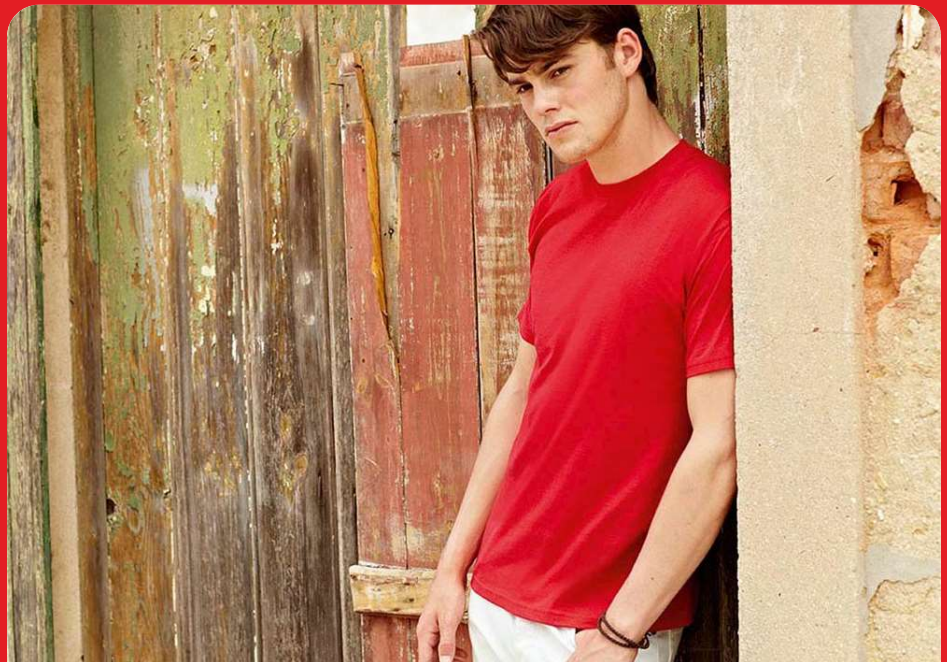
** Measure from highest point of shoulder to bottom edge of garment

Pricing & Packs

Available in **singles** or as **12 pack**.
 See www.mdpsupplies.com for pricing.

Care Instructions

- Wash Max 40°
- Do Not Bleach
- Tumble Dry Low Heat
- Iron - Medium Heat
- Do Not Dry Clean



Colours

Some colours may be special order only - check www.mdpsupplies.com for stock colours

| | | | | | |
|----------------------------|------------------------|--------------------------|-------------------------|-----------------------------|---------------------------|
| 30 White | 32 Navy | 34 Sunflower | 36 Black | 38 Bottle Green | 40 Red |
| 41 Burgundy | 44 Orange | 47 Kelly Green | 51 Royal Blue | 52 Light Pink | 57 NEW Fuchsia |
| 59 Classic Olive | 60 Natural | 80 Steel Blue | 87 Charcoal | 93 Ash | 94 Heather Grey |
| 3M Khaki | AZ Deep Navy | BX Brick Red | CQ Chocolate | GL Light Graphite | K2 Yellow |
| PE Purple | YT Sky Blue | ZU Azure Blue | | | |

Visit our website at www.mdpsupplies.com to see our full range of supplies for signmakers and garment printers